

LAUFEN PRO

WC seat and cover 'universal', removable, with lowering system, for hollow space fixing

DIMENSIONS

Length	450 mm
Width	375 mm
Height	55 mm

COLOUR AND FINISH

000 White

OPTIONS

000 - standard option



Hinge material : Stainless steel

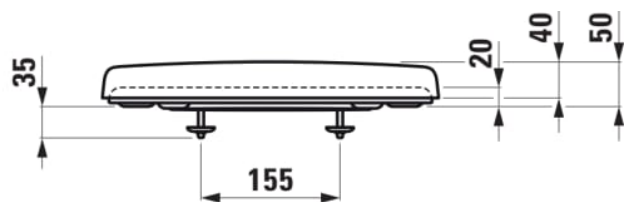
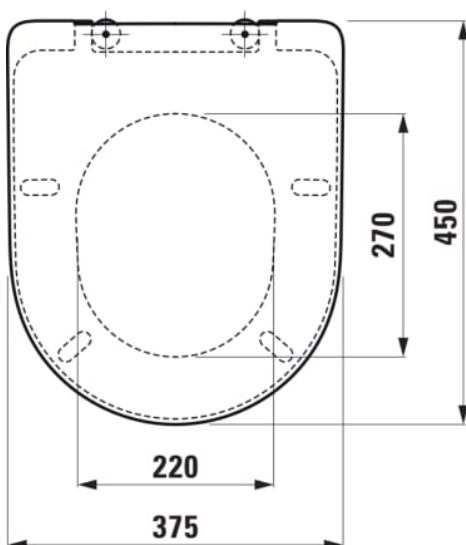
Quick release

Soft close system

Net weight (kg) : 2.2

Shape : Round

TECHNICAL DRAWINGS



COMPATIBLE WITH



Wall-hung WC, washdown,
with flushing rim

H820956...0001



Wall-hung WC 'rimless',
washdown, with niches,
without flushing rim

H820964...0001



Floorstanding WC,
washdown, with flushing
rim, outlet
horizontal/vertical

H822952...0001



Floorstanding WC 'rimless',
washdown, without flushing
rim, outlet
horizontal/vertical

H822956...0001



Floorstanding WC, close-
coupled, washdown,
rimless, outlet horizontal or
vertical

H825962...0001



Floorstanding WC, close-
coupled, washdown,
rimless, outlet horizontal or
vertical

H825962...2311



Floorstanding WC, close-
coupled, washdown, with
flushing rim, outlet
horizontal/vertical

H825952...0001



Floorstanding WC, close-
coupled, washdown, with
flushing rim, outlet
horizontal/vertical

H825952...2311

LAUFEN PRO

LAUFEN pro is a comprehensive bathroom range, which offers the ideal solution for every spatial situation and requirement and also reflects the building values of the current generation. Industrial design is the modern answer to the once revolutionary idea that everyone has a right to enjoy beautiful forms. Good design is now no longer a right reserved for the most affluent customers. Modern methods of industrial production and designers such as Peter Wirz of Vetica, who put optimum manufacturing feasibility at the forefront of their creative processes, make such sanitary ware ranges as LAUFEN pro possible. This does not just benefit the designer, more importantly, it also benefits the customer.

