



VAL

Wall-hung bidet

DIMENSIONS

Length	530 mm
Width	390 mm
Height	430 mm

COLOUR AND FINISH

<input type="checkbox"/>	400 White with LCC (Laufen Clean Coat)
--------------------------	--

OPTIONS

302 - with one tap hole, without lateral mounting hole for water inlet

SPECIFICATION TEXT

Charge 302 – 1 centre tap hole without lateral holes

MOUNTING ACCESSORIES INCLUDED

lufen EasyFit system M12, order no. 89282.7

MOUNTING ACCESSORIES EXCLUDED

Siphon D40, order no. 89394.8 Stone screw fastening kit M12

Fixing kit : Included

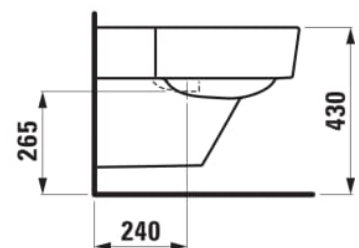
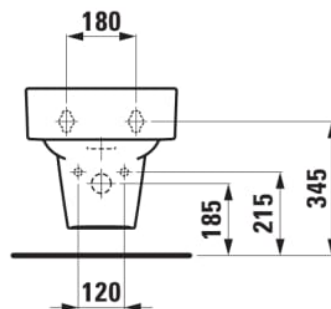
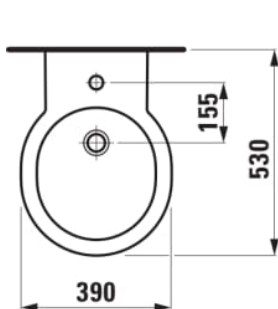
Net weight (kg) : 17

Tap hole configuration : 1 tap hole

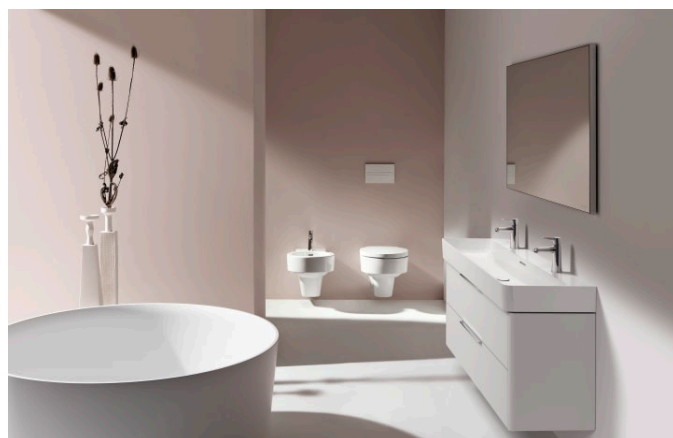
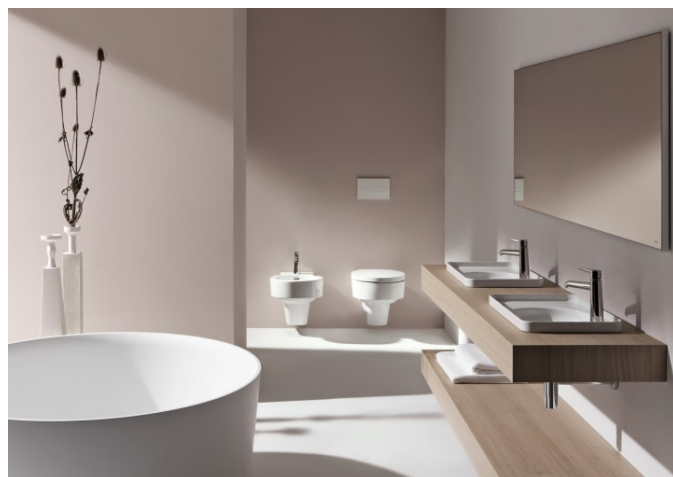
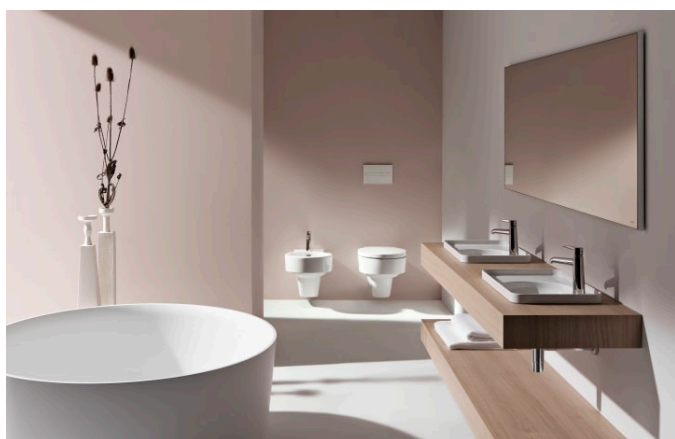
Installation type : Wall-hung

Shape : Round

TECHNICAL DRAWINGS







VAL

The extraordinary design potential of LAUFEN's revolutionary SaphirKeramik reveals itself in the bathroom collection Val, designed for the Swiss bathroom specialist by star designer Konstantin Grcic from Munich. Simple architectural lines, extremely narrow edges and fine surface structures make the washbasins of this collection globally unique. The Val range includes washbasins, washbasin bowls, trays, bathtubs and new bathroom furniture from the Space collection.

